

FLOOR PLATE Building X - Ground



management ☎: 07 3846 0047  
8 Musgrave Street West End Qld 4101

The sizes and areas on the following floor plans have been derived from preliminary design dimensions and are approximate and indicative only and subject to change without notice. Design changes, council approval and field survey may differ from those shown on this plan. The proposed balcony on this apartment floor plan is indicative only. Windows facing the common area hallway are notional only. Final approval for positioning of the windows will be determined by BCA and Fire Authority conditions.



FLOOR PLATE Building X - Level 1



**☎: 07 3846 0047**

8 Musgrave Street West End Qld 4101

Measurements have been derived from preliminary design dimensions and are approximate and indicative only and subject to change without notice. Please contact us for the most up to date information.



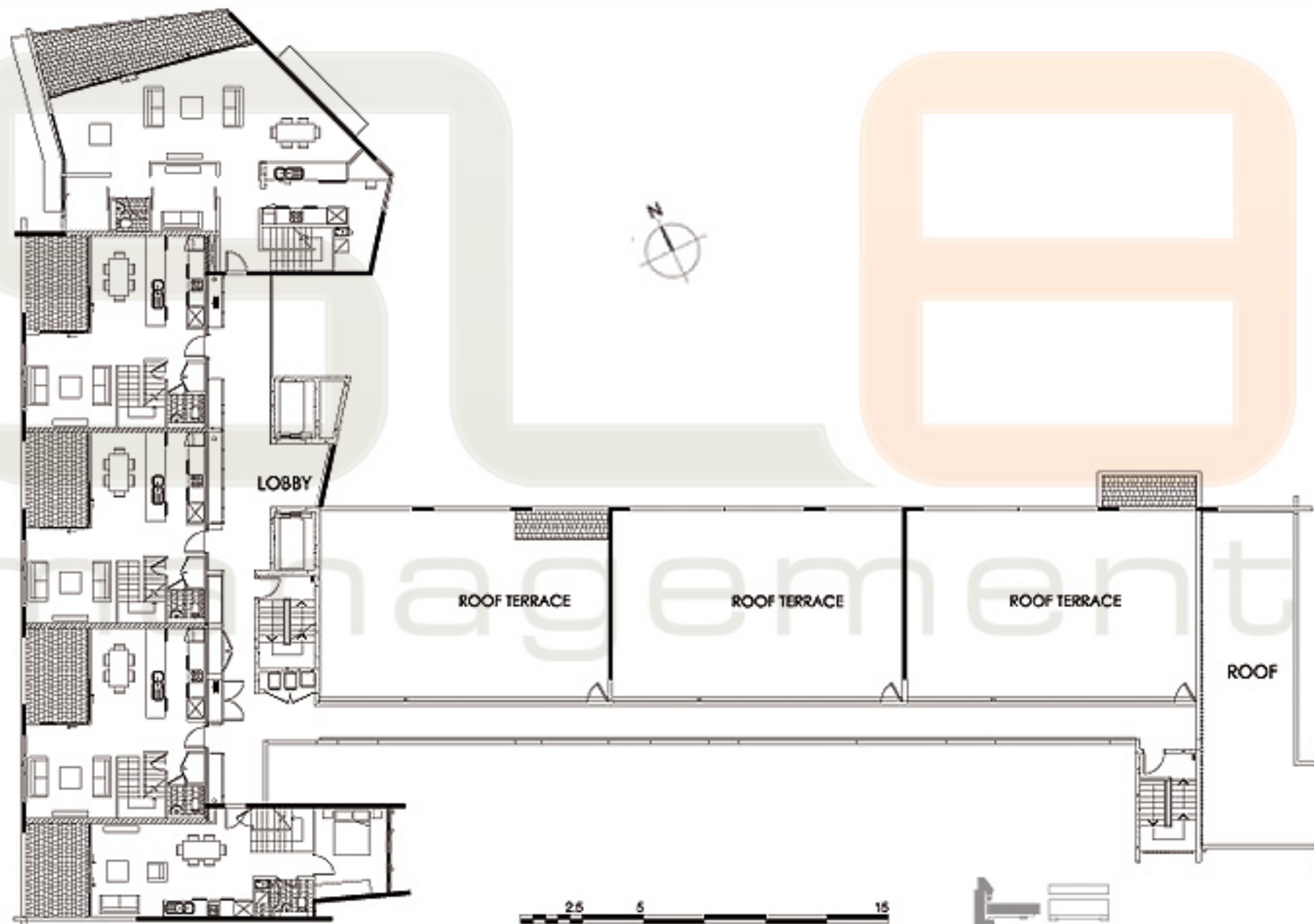


FLOOR PLATE Building X - Levels 2 - 6

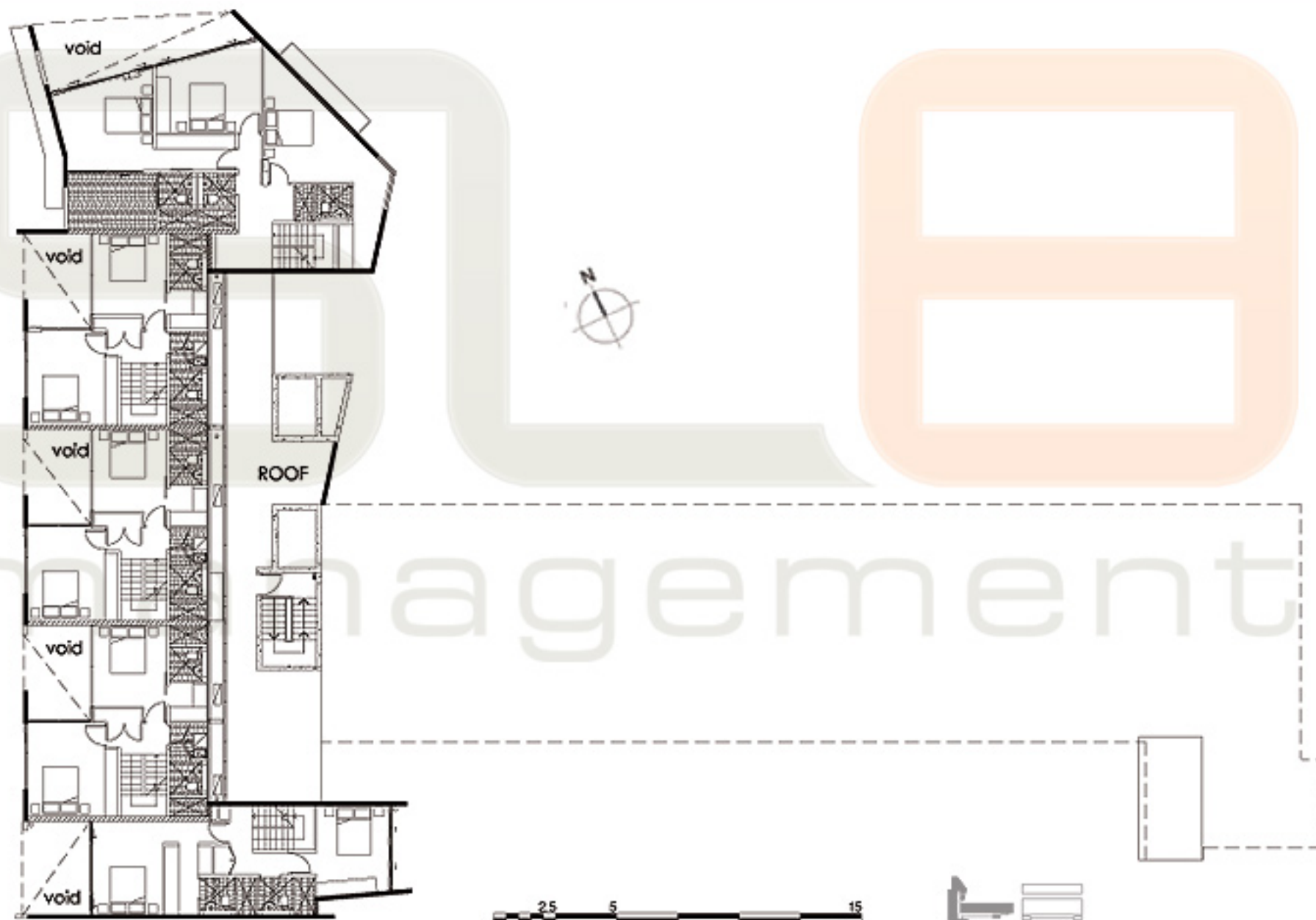


FLOOR PLATE Building X - Level 7



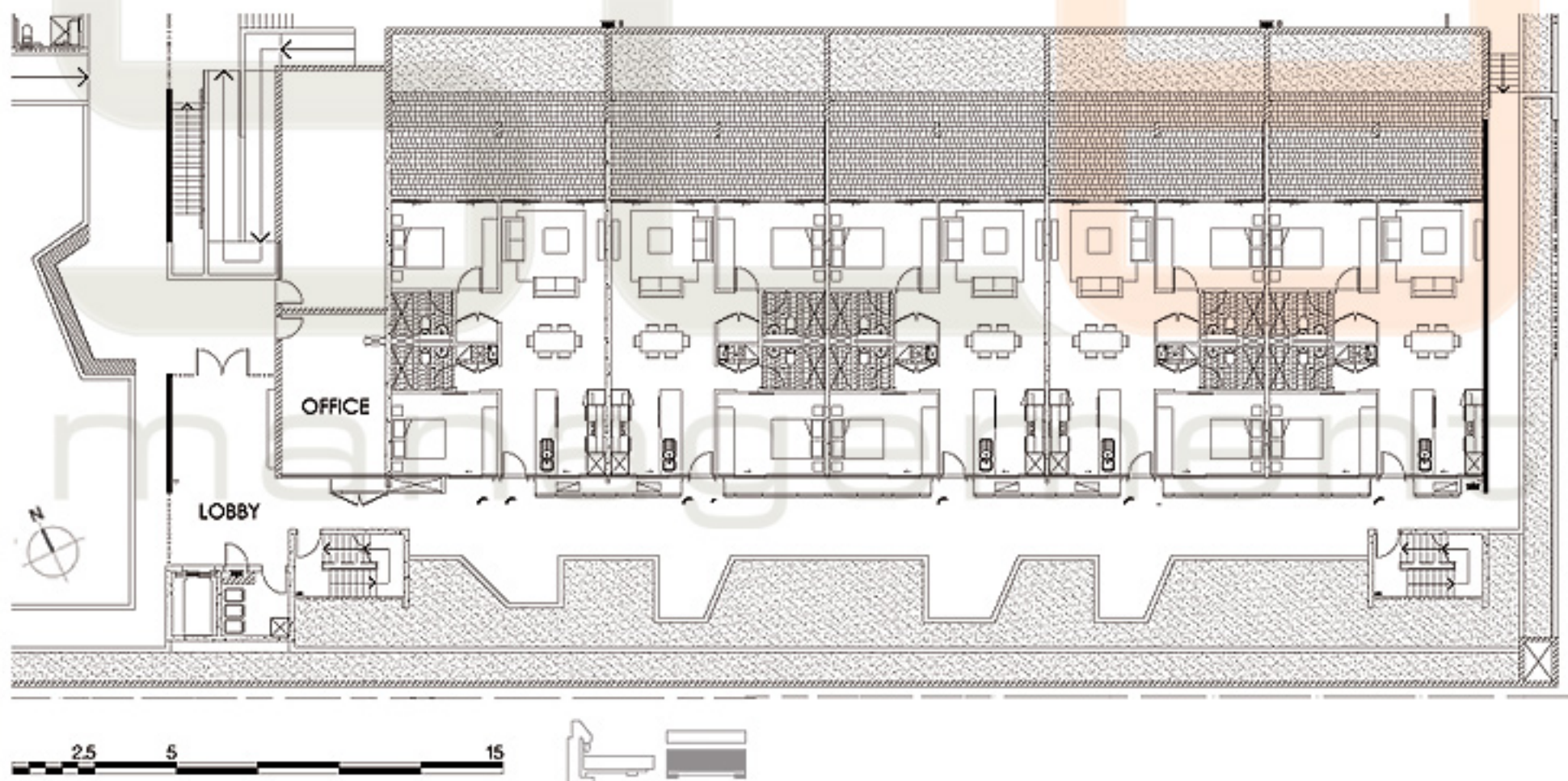


FLOOR PLATE Building X - Level 8



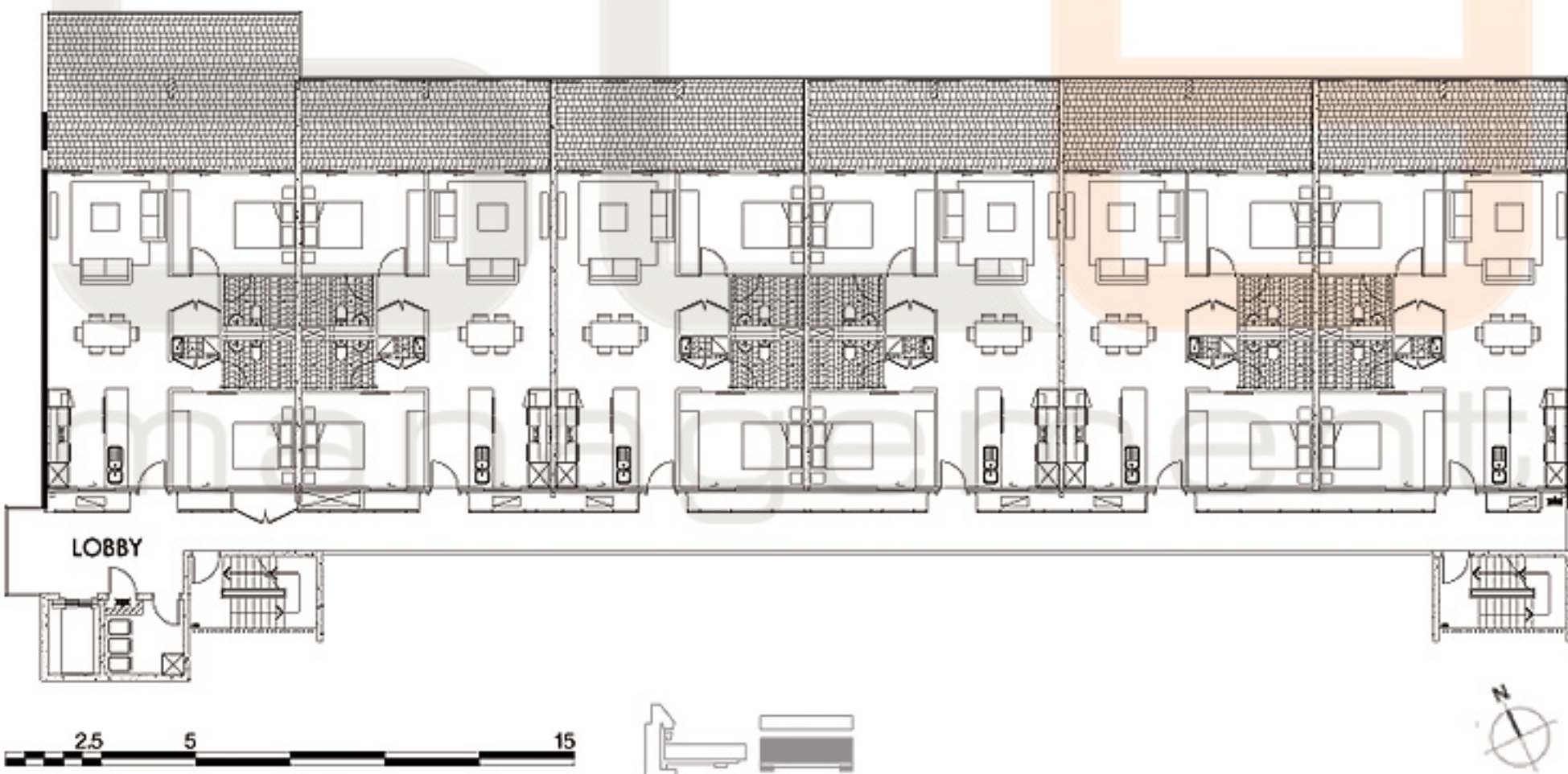
FLOOR PLATE Building X - Level 9





FLOOR PLATE Building Y - Ground





FLOOR PLATE Building Y - Level 1

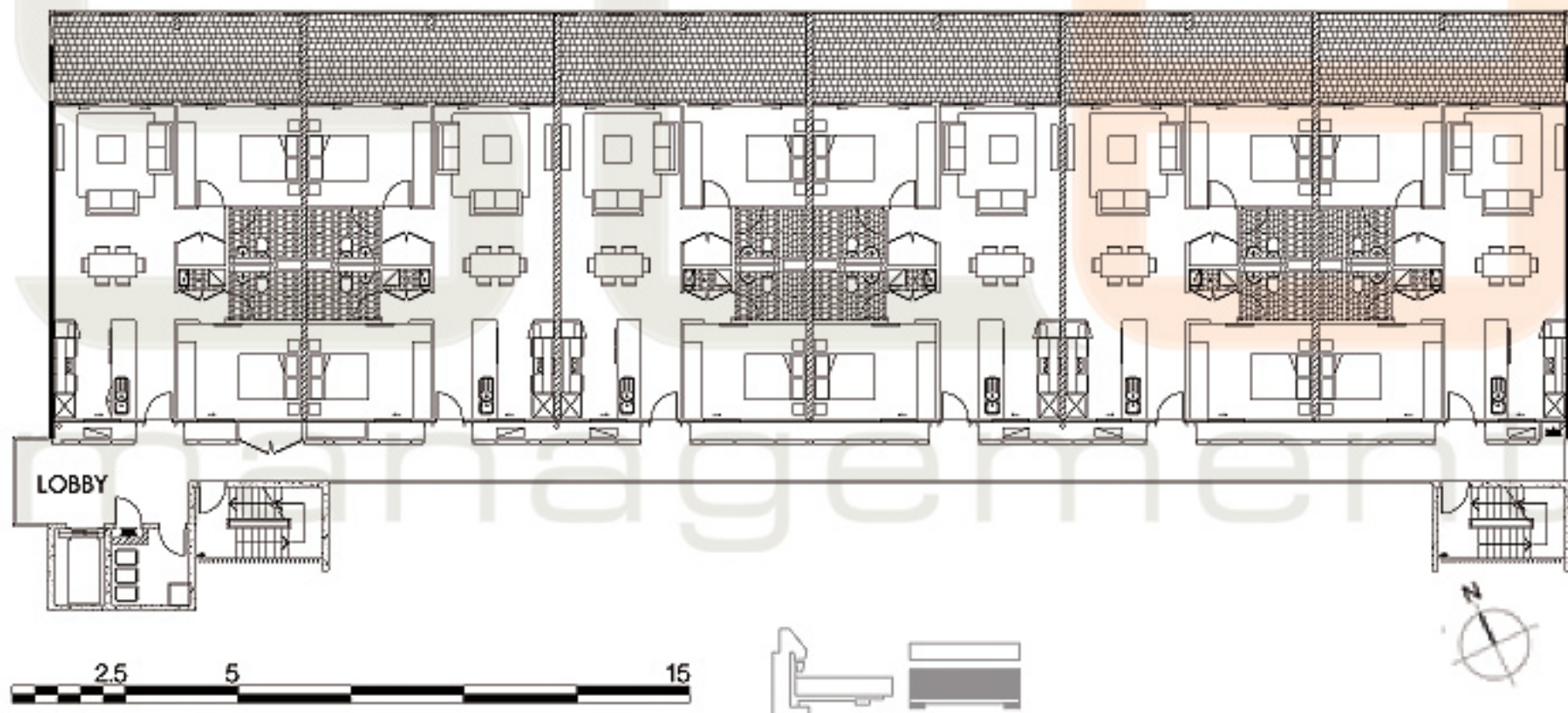


**☎: 07 3846 0047**

8 Musgrave Street West End Qld 4101

Measurements have been derived from preliminary design dimensions and are approximate and indicative only and subject to change without notice. Please contact us for the most up to date information.





## FLOOR PLATE Building Y - Levels 2 - 5





FLOOR PLATE Building Y - Levels 6 & 7

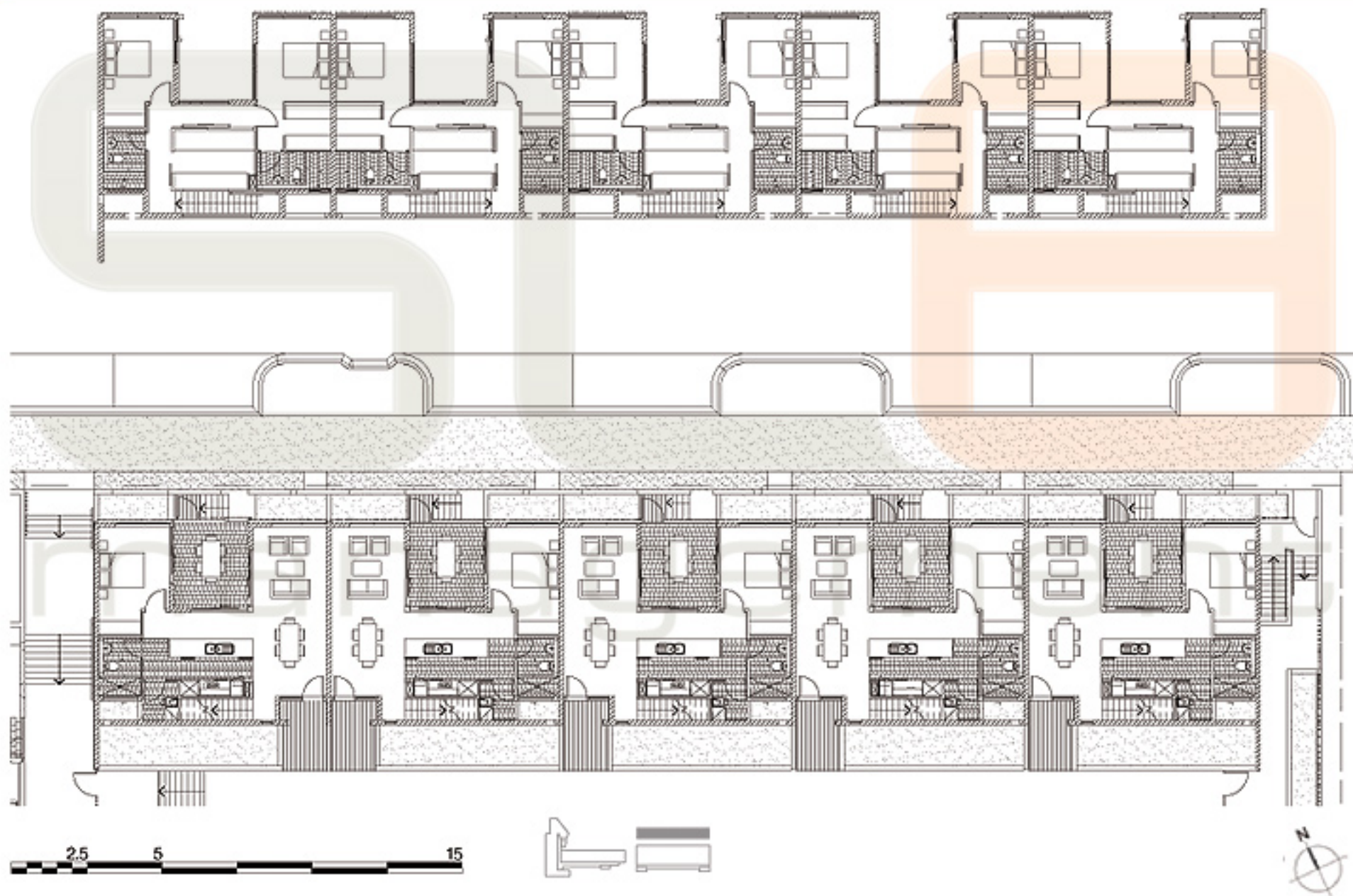


**☎: 07 3846 0047**

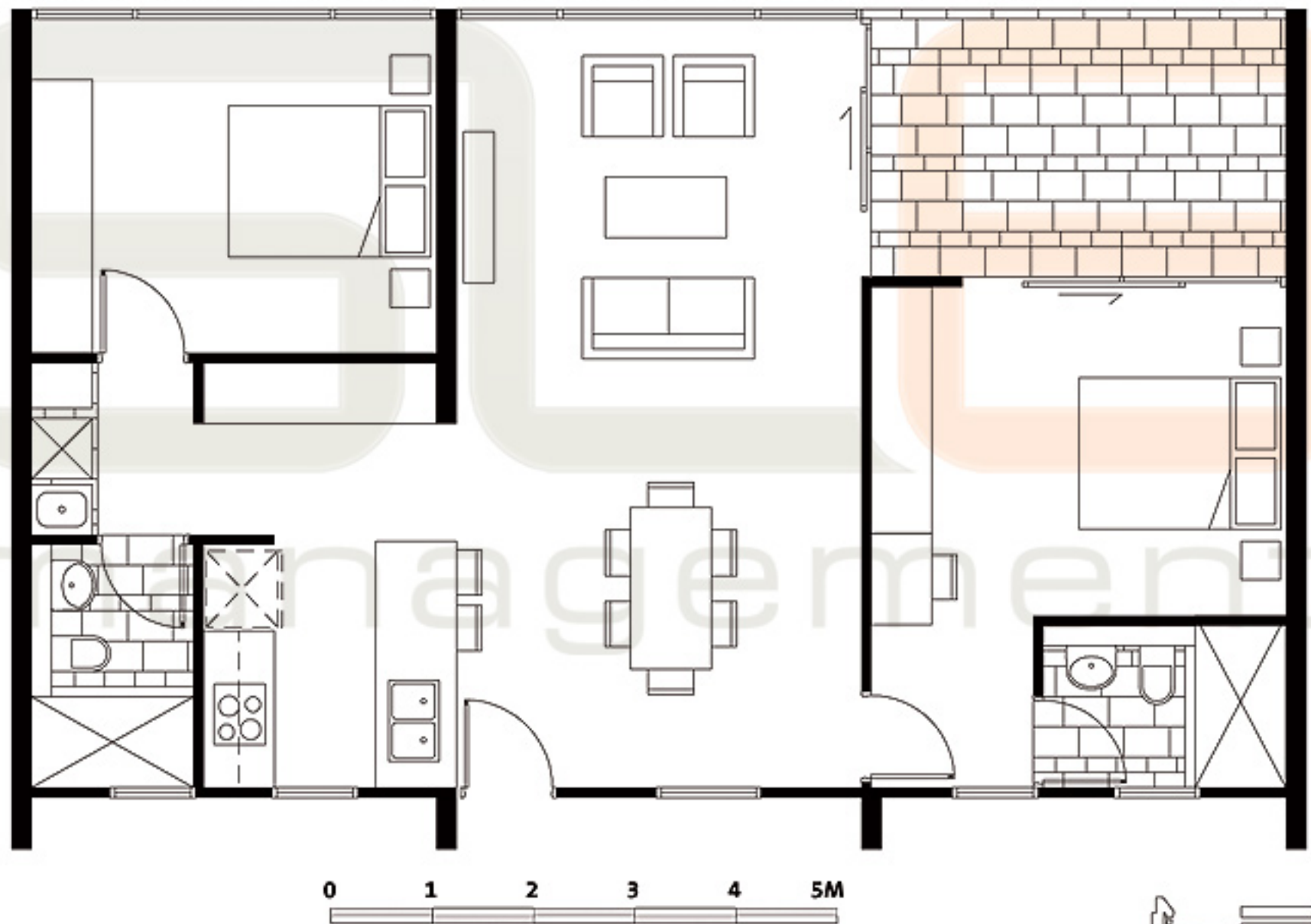
8 Musgrave Street West End Qld 4101

Measurements have been derived from preliminary design dimensions and are approximate and indicative only and subject to change without notice. Please contact us for the most up to date information.





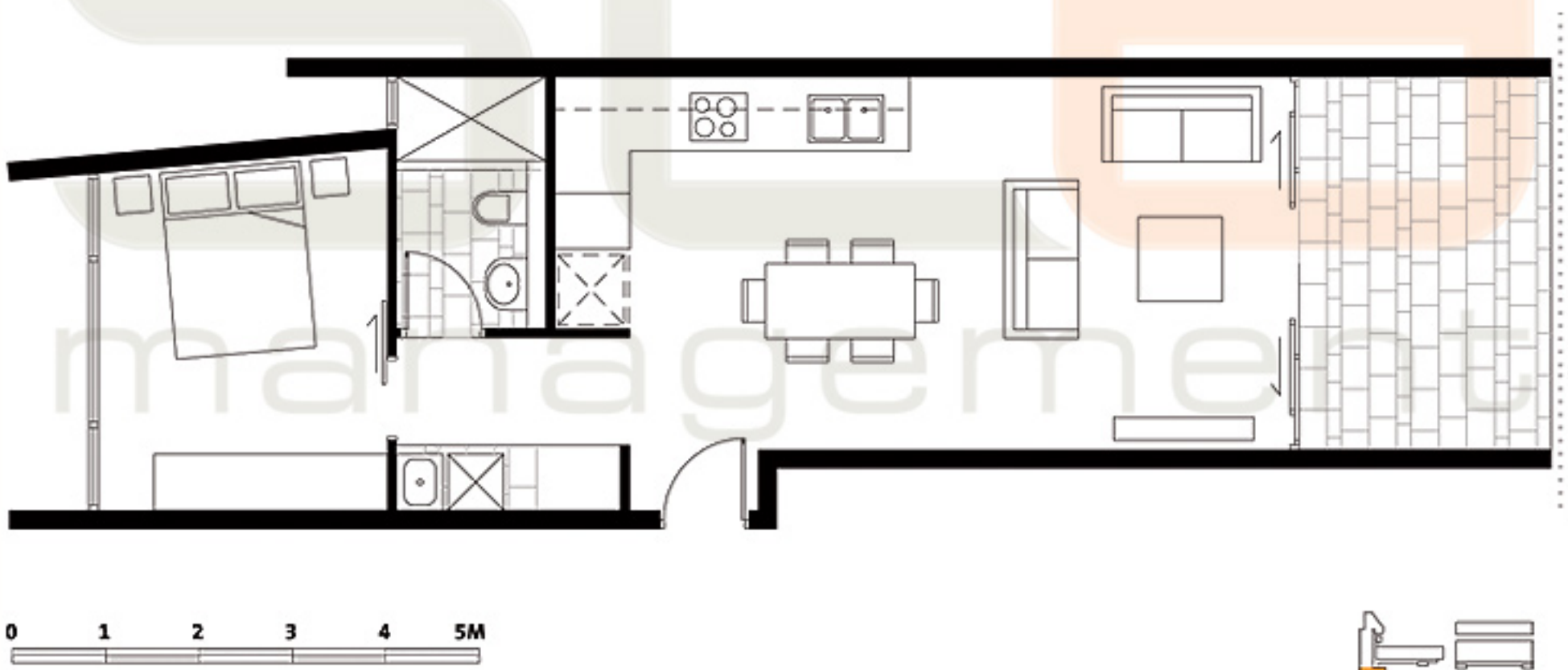
FLOOR PLATE Building Z - Ground & Level 1



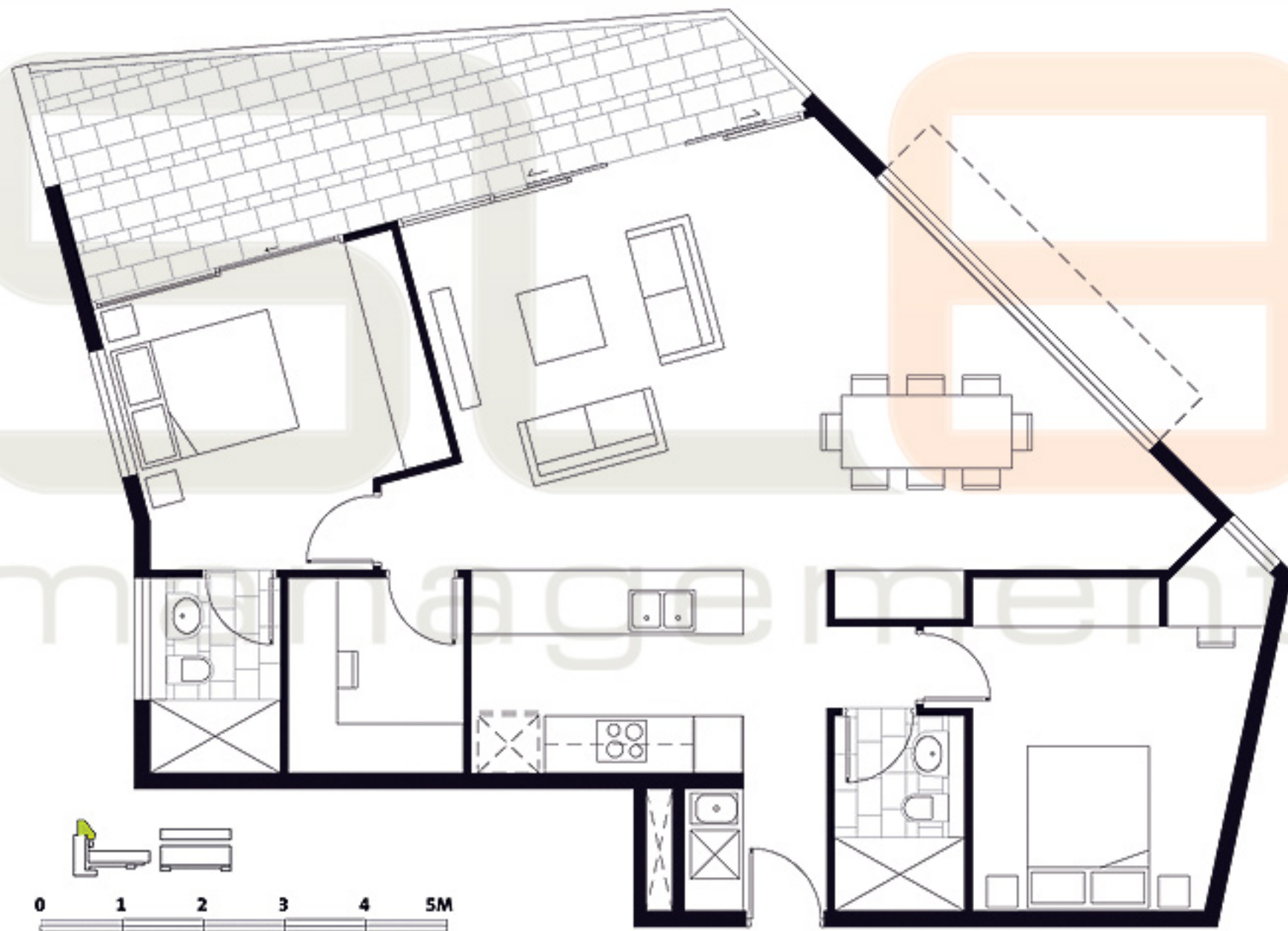
FLOOR PLAN A - Area : Internal 86m<sup>2</sup> : Balcony 11m<sup>2</sup> : Total: 97m<sup>2</sup>

Measurements have been derived from preliminary design dimensions and are approximate and indicative only and subject to change without notice. Please contact us for the most up to date information.





FLOOR PLAN B - Area : Internal 56m<sup>2</sup> : Balcony 12m<sup>2</sup> : Total: 68m<sup>2</sup>



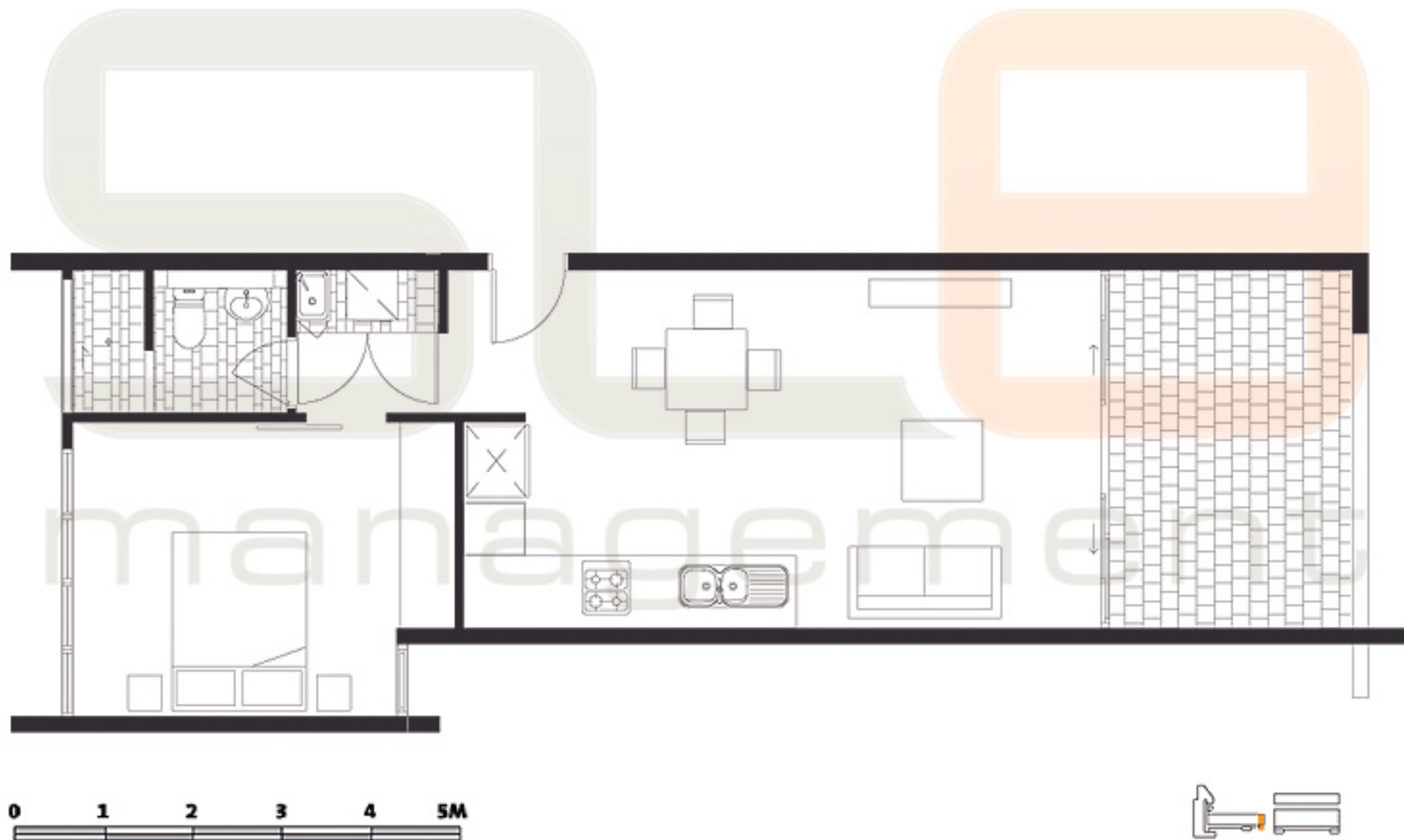
FLOOR PLAN C - Area : Internal 102m<sup>2</sup> : Balcony 20m<sup>2</sup> : Total: 122m<sup>2</sup>

Measurements have been derived from preliminary design dimensions and are approximate and indicative only and subject to change without notice. Please contact us for the most up to date information.





FLOOR PLAN D - Area : Internal 100m<sup>2</sup> : Balcony 69m<sup>2</sup> : Total: 169m<sup>2</sup>



FLOOR PLAN E - Area : Internal 53m<sup>2</sup> : Balcony 11m<sup>2</sup> : Total: 64m<sup>2</sup>

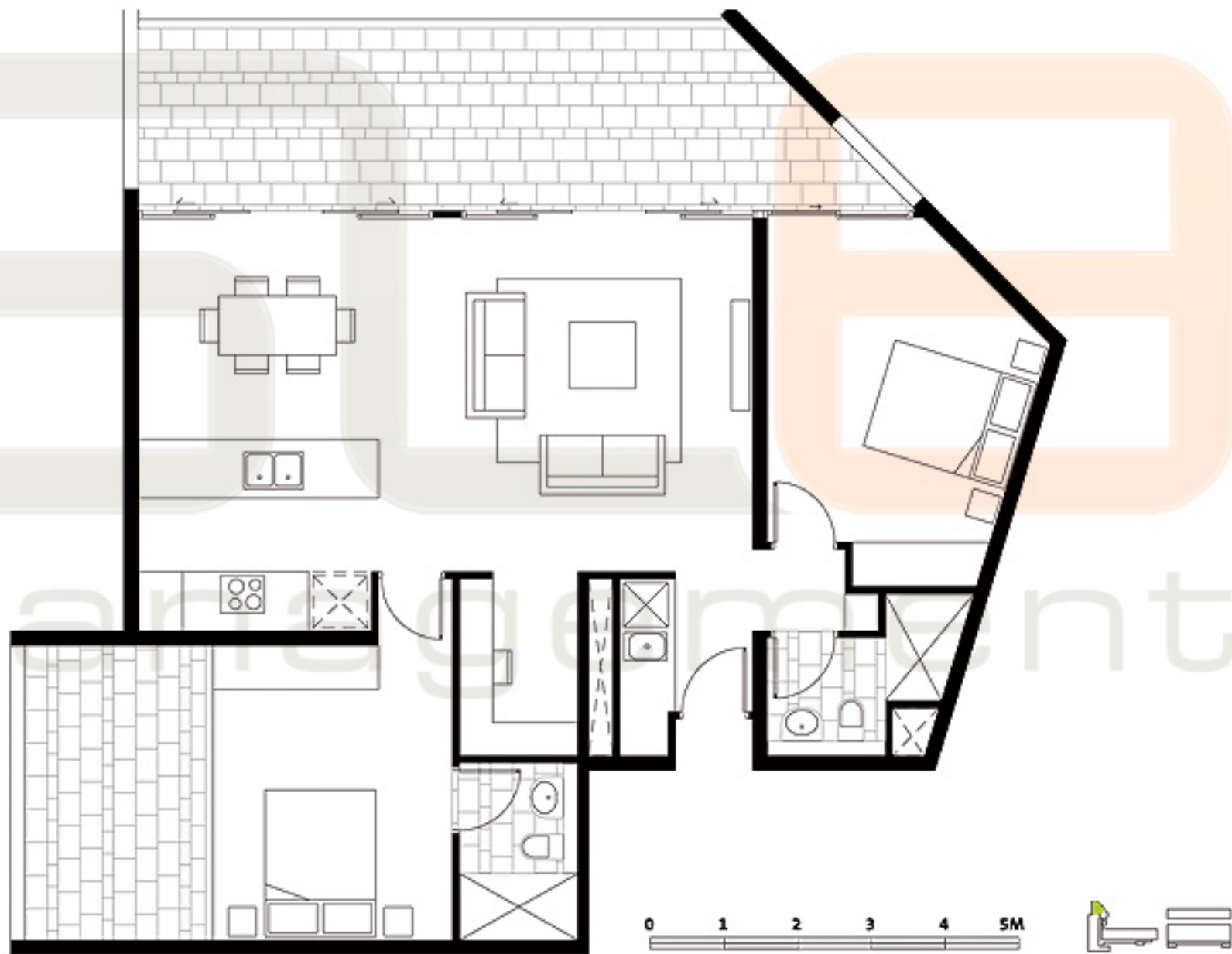


**☎: 07 3846 0047**

8 Musgrave Street West End Qld 4101

Measurements have been derived from preliminary design dimensions and are approximate and indicative only and subject to change without notice. Please contact us for the most up to date information.





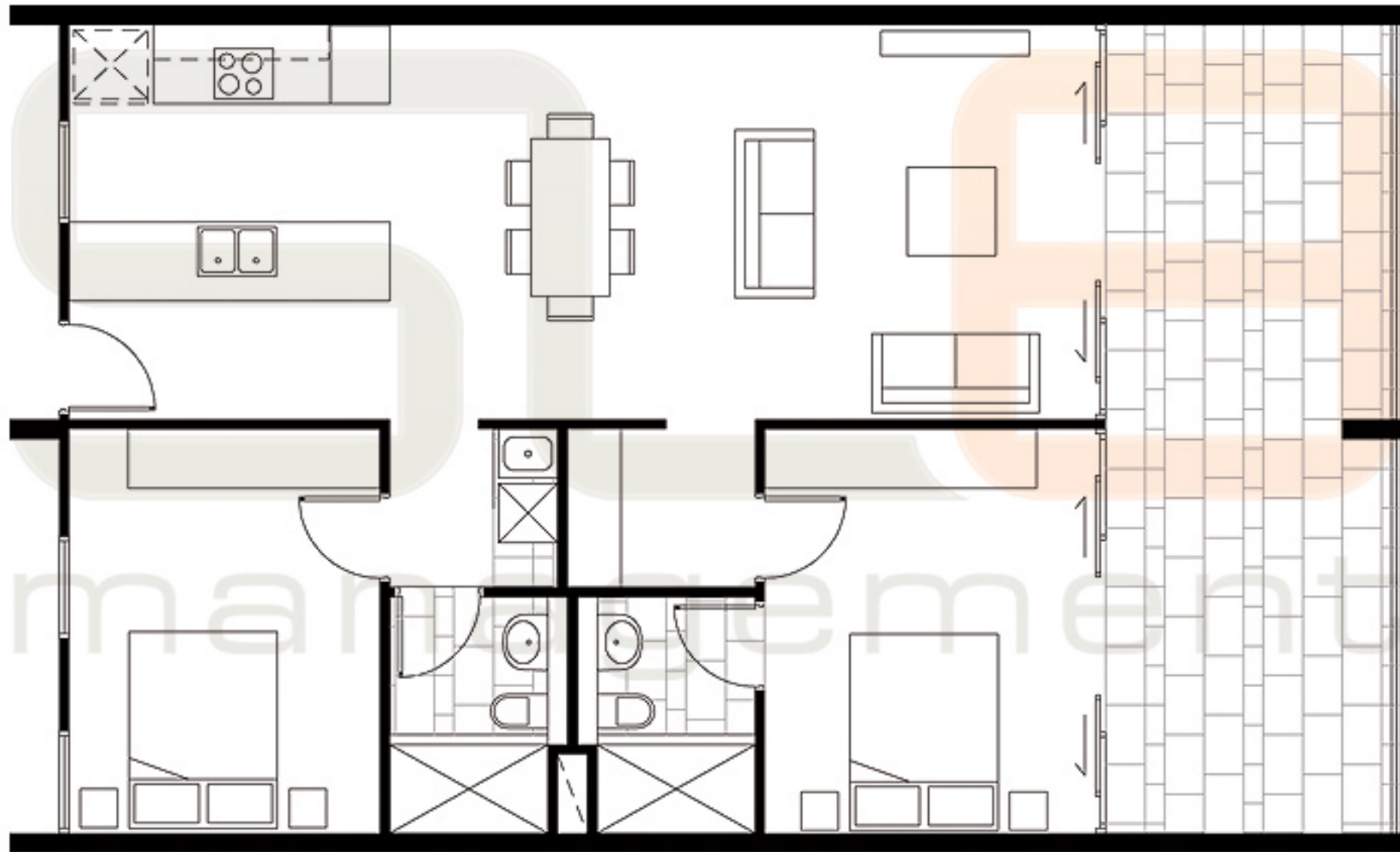
FLOOR PLAN F - Area : Internal 97m<sup>2</sup> : Balcony 36m<sup>2</sup> : Total: 133m<sup>2</sup>



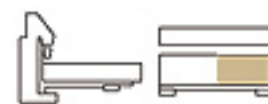
**☎: 07 3846 0047**

8 Musgrave Street West End Qld 4101

Measurements have been derived from preliminary design dimensions and are approximate and indicative only and subject to change without notice. Please contact us for the most up to date information.

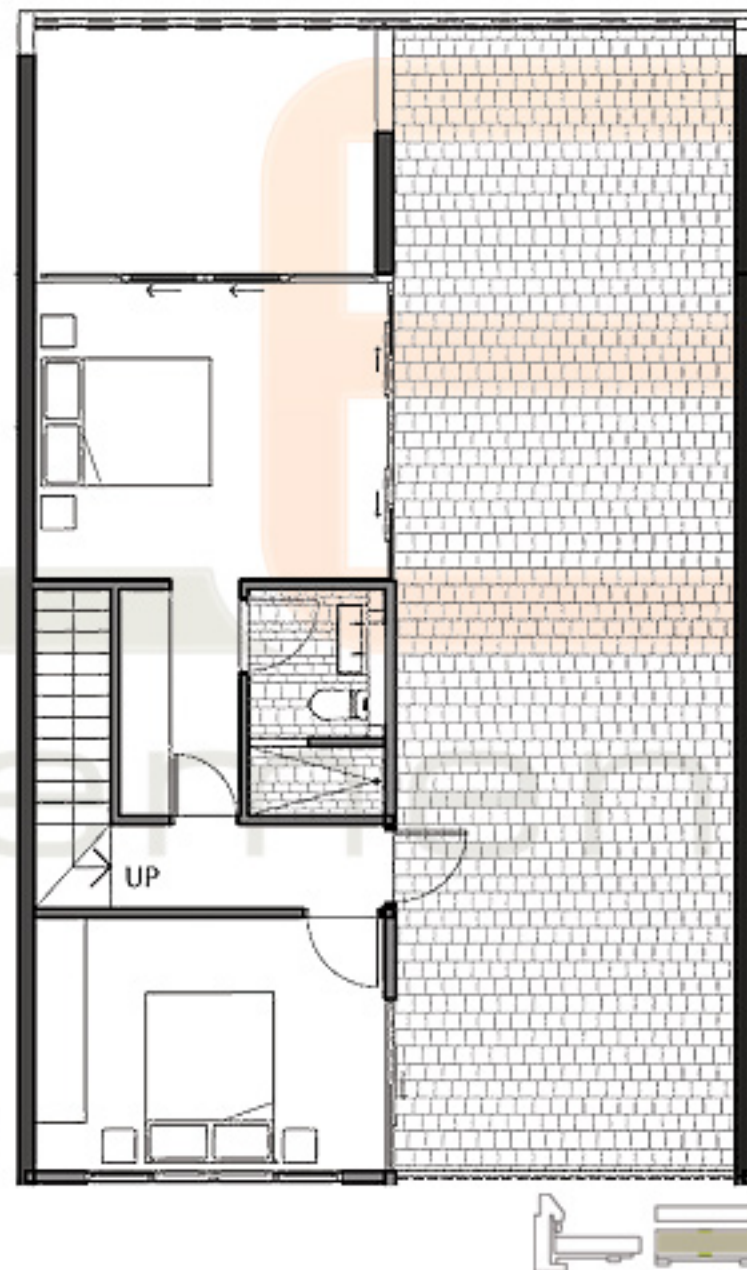
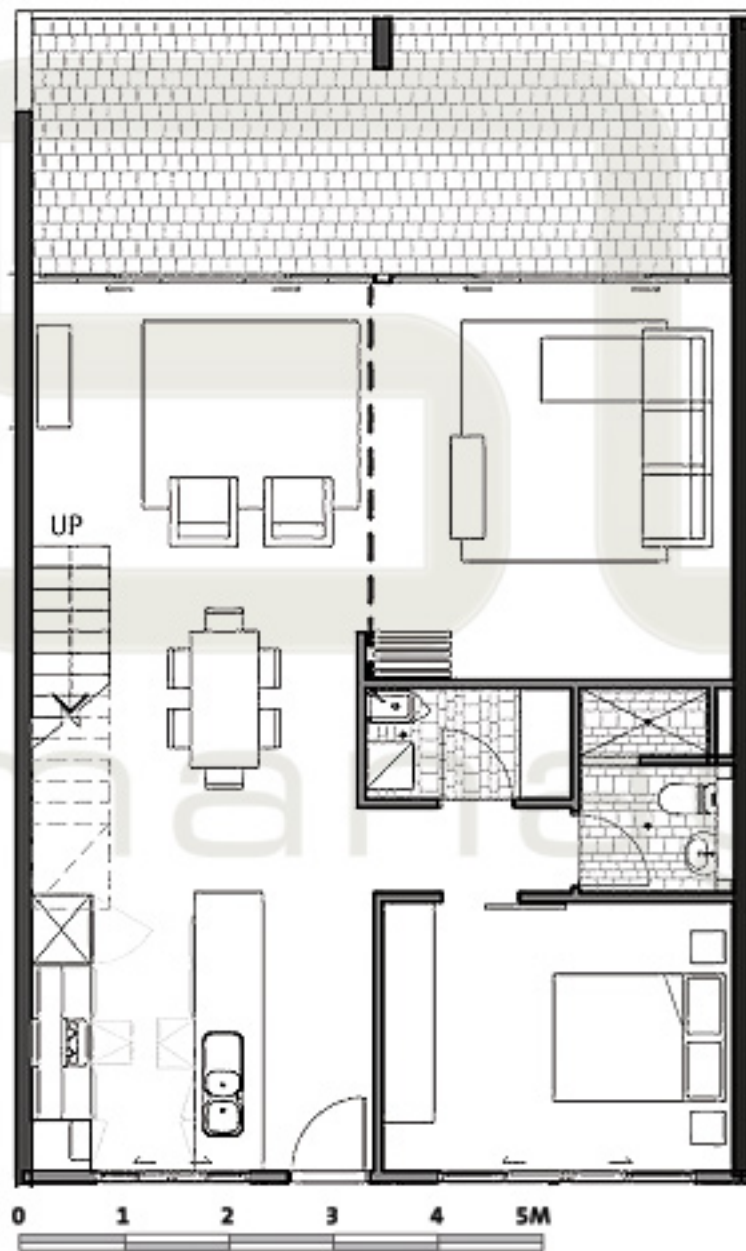


0 1 2 3 4 5M

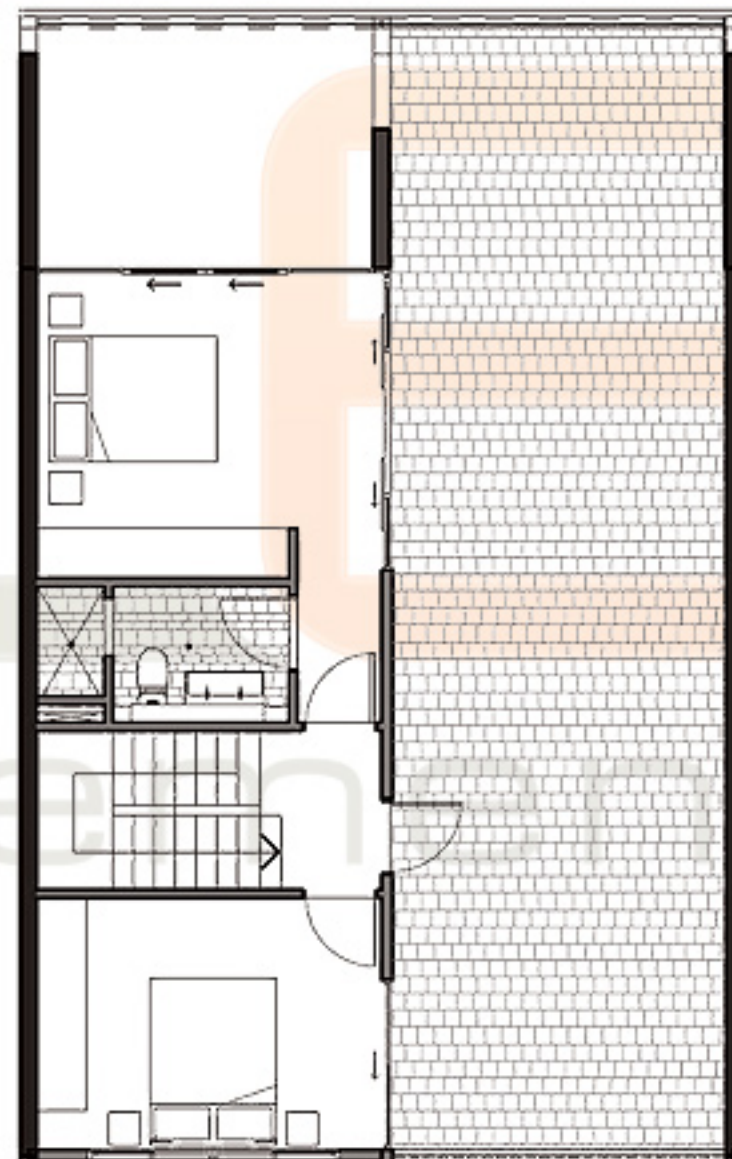


FLOOR PLAN 9 Building Y - Area : Internal 88m<sup>2</sup> : Balcony 25m<sup>2</sup> : Total: 113m<sup>2</sup>





FLOOR PLAN g1 Building Y - Area : Internal 128m<sup>2</sup> : Balcony 83m<sup>2</sup> : Total: 211m<sup>2</sup>

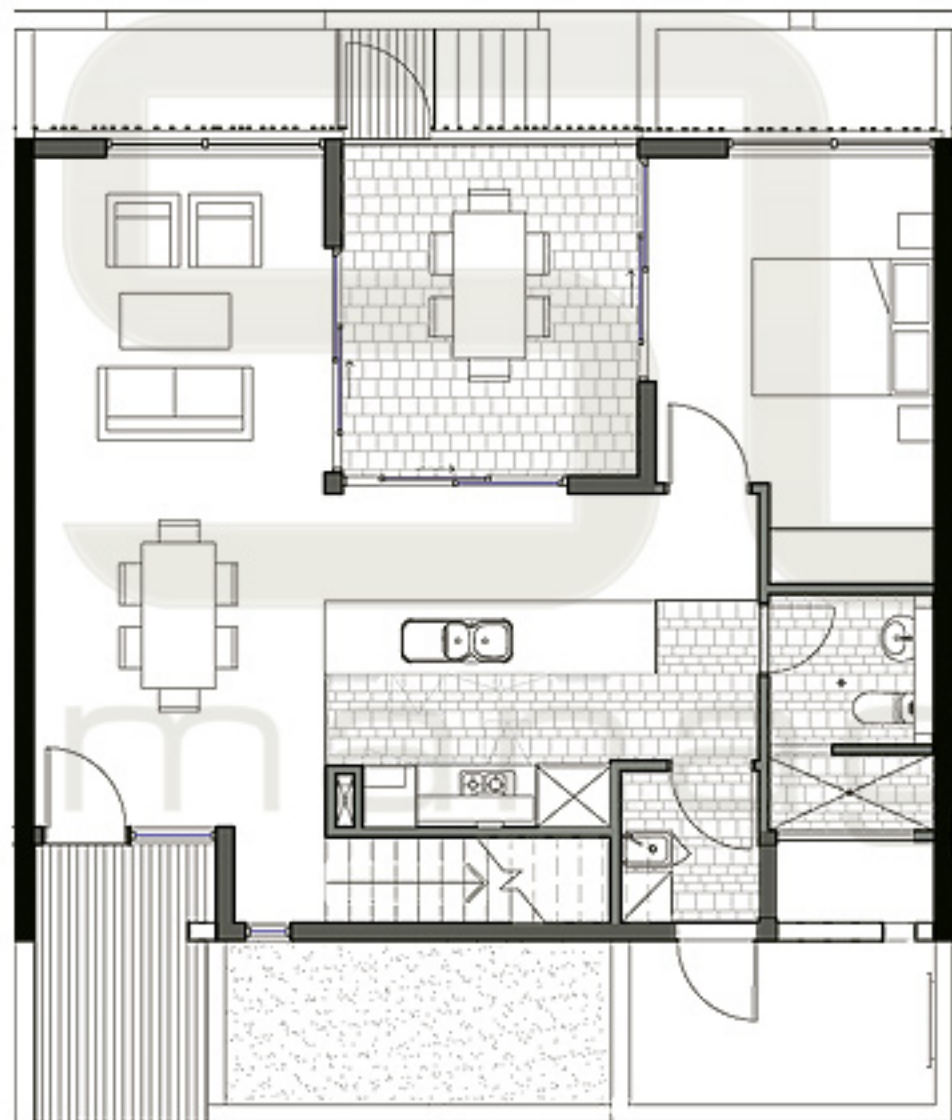


0 1 2 3 4 5M

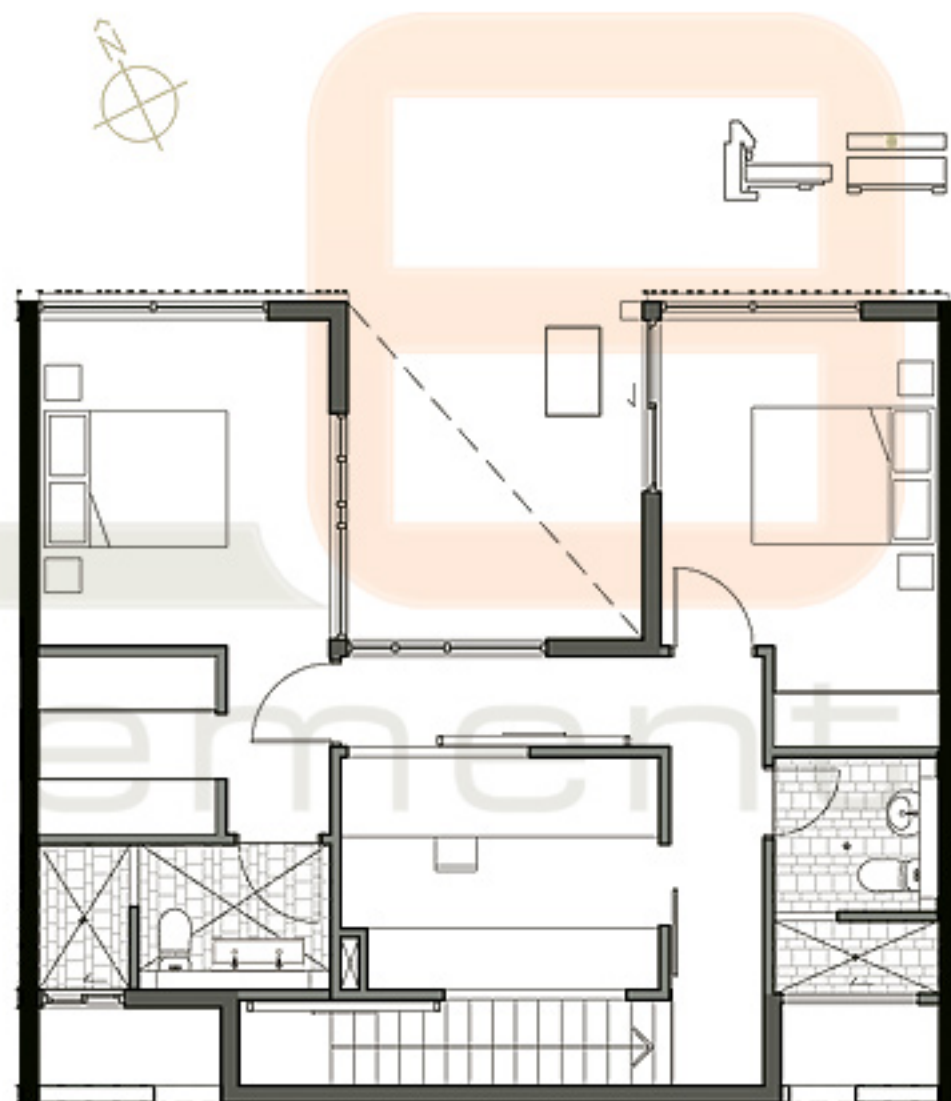


FLOOR PLAN g2 Building Y - Area : Internal 127m<sup>2</sup> : Balcony 83m<sup>2</sup> : Total: 210m<sup>2</sup>





0 1 2 3 4 5M



FLOOR PLAN h - Area : Internal 137m<sup>2</sup> : Balcony 49m<sup>2</sup> : Total: 186m<sup>2</sup>



☎: 07 3846 0047

8 Musgrave Street West End Qld 4101

Measurements have been derived from preliminary design dimensions and are approximate and indicative only and subject to change without notice. Please contact us for the most up to date information.